

Introduction to Digital Imaging

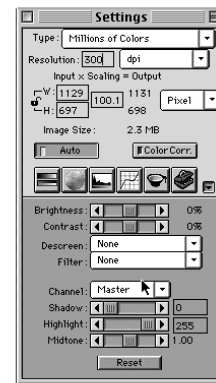
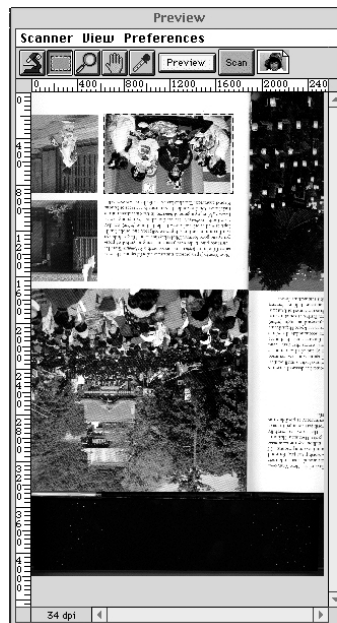
CS 116, fall 2002

Scanning

To scan in the classroom, start by sitting at the computer which the scanner is attached to. You can also scan in the ASH lobby but the two machines use different scanning programs. Quit out of any running programs to maximize available RAM, then run Photoshop (from the dock in the classroom or the desktop in the lobby). The rest of these instructions apply to the classroom machine, however, the lobby machine has a scanning info sheet next to it for your reference.

From the **File** menu, choose **Import** and then **ScanWizard**. This runs the scanning software inside Photoshop.

You should have a Preview window and a Settings window, like those pictured to the right. Note that what appears in the Preview window might very well be different from the last time you ran the scanning software.



Lay your picture on the scanner and hit the **preview** button in the Preview window. You will see a rough version of whatever is on the scanner. Sweep out a rectangle to identify what to scan.

Introduction to Digital Imaging

CS 116, fall 2002

The Settings window is where all the real action takes place. Learn it. Love it. Live it.

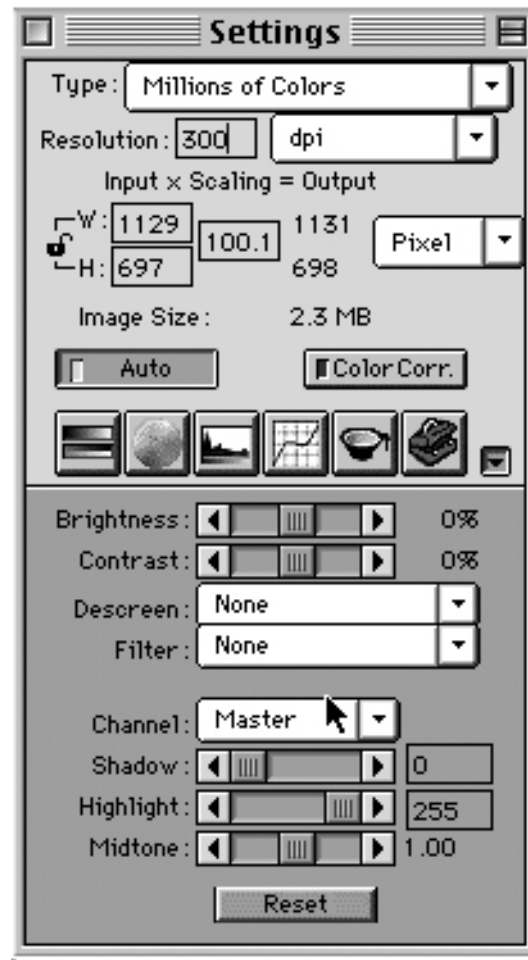
Type indirectly controls bit depth. You can and should set this.

Resolution is where you can enter the pixel density (dpi, ppi, etc.). You may have to change to the units you like before typing into this box. You can and should set this, too.

W and **H** give you the width and height of the image. Changing the units using the pulldown menu on the right will report this information in pixels, inches, etc. I recommend setting this to Pixels. That's what we really care about. **Set either w/h or ppi.** It won't let you set both.

Image Size gives you the memory footprint that the image will have **as determined by the current settings of the scanner software.** Of course, you need to hit the scan button in the Preview window to actually get the scan made!

For now, ignore the bottom half of the settings box. Just leave **Auto** clicked and **Color Corr.** un-clicked.



Hit the **SCAN** button on the Preview window to scan your image. This will take some time, and when it's done, the scanner software will automatically quit, leaving you in Photoshop proper.

Save your image to disk using **File -> Save**. Choose the file format that is most appropriate for your needs. Make sure to save the file onto your Zip disk so you can take it with you.