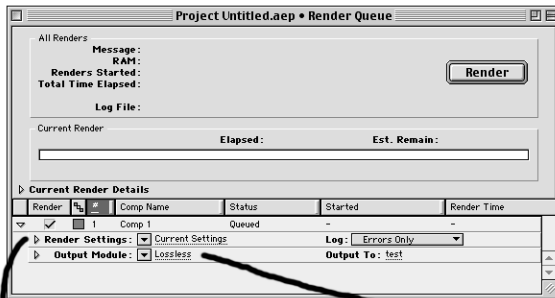
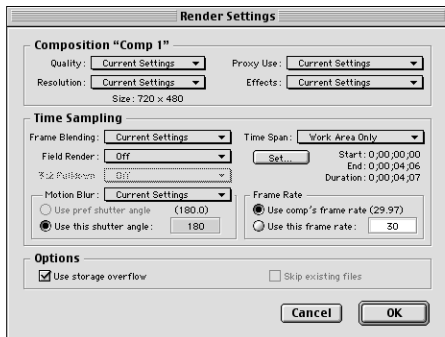


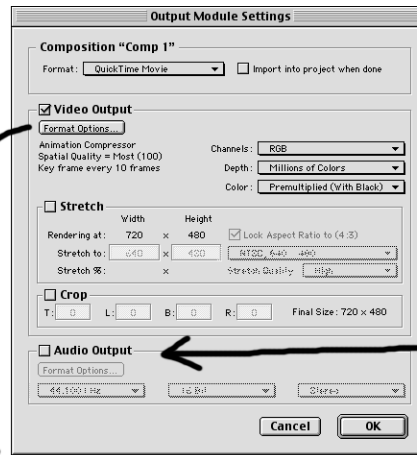
A possibly useful guide to rendering composites in After Effects



The render queue box lets you set the output quality and the codec for your composition. This map is an attempt to guide you through the various options.

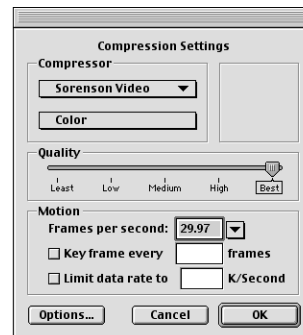


The Render Settings box lets you choose between draft quality and high quality. You may want to use draft quality as you preview your work, but I recommend best quality for the version that you hand in.



The Output Module box is where you tell After Effects to output both video and audio, and it's where you select the codec to use.

Click here to output audio! Otherwise, your movie will be silent.



This is a standard QuickTime codec selection box. You will see it in other video applications. Choose the codec you want, choose the quality (best), and it should automatically set the framerate for you.

If you enable the "keyframe every" box, your movie will look better but will take up a little more memory. You might want to experiment with this before you hand in your final PSA.