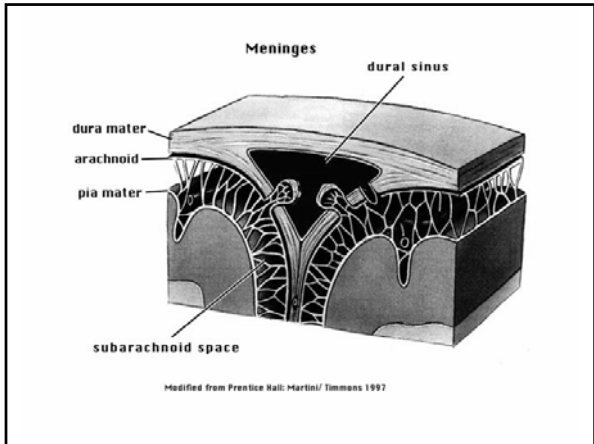


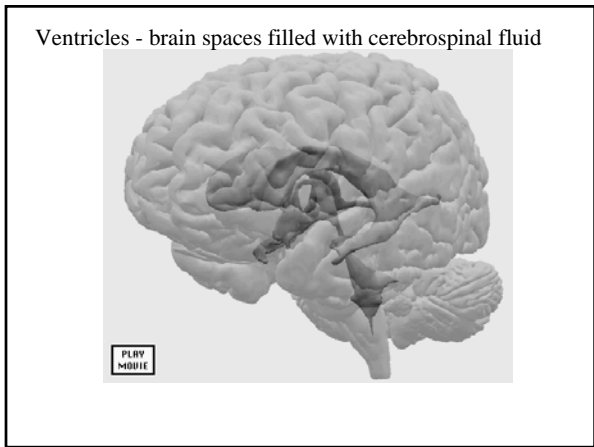
Brain and Spinal Cord (CNS) Anatomy

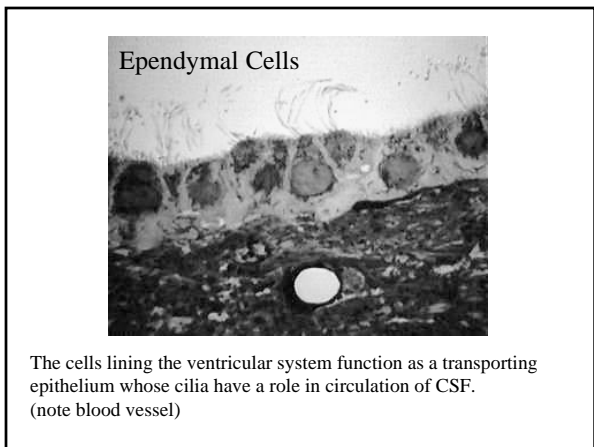
- Support structures
 - (bone)
 - meninges
 - cerebrospinal fluid (CSF)
- Protective structure
 - blood-brain barrier
- General arrangement
 - distribution of white and gray matter

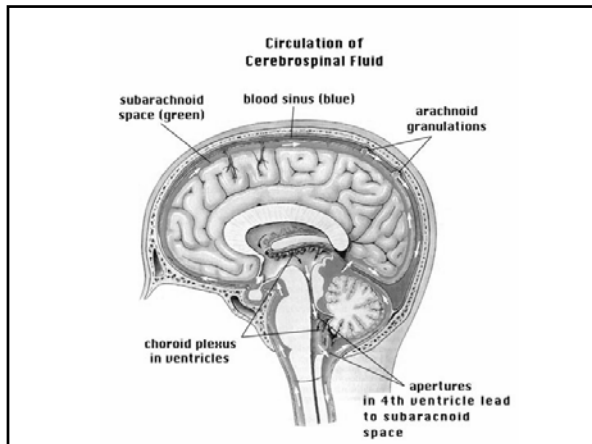
Meninges

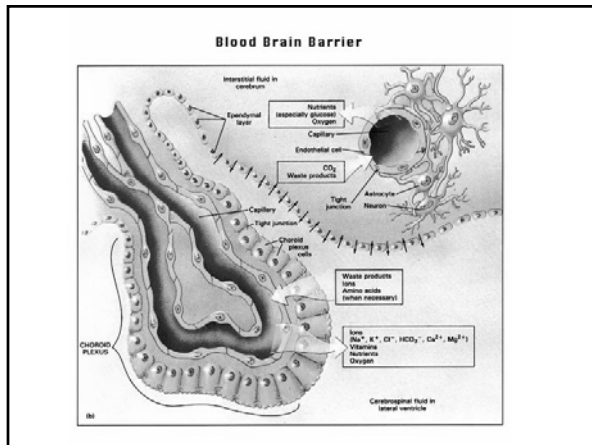
A general term which refers to all three connective tissue envelopes of the brain. The dura mater, arachnoid and pia mater cover both the brain and the spinal cord; cerebrospinal fluid lies within the space between the arachnoid and the pia.

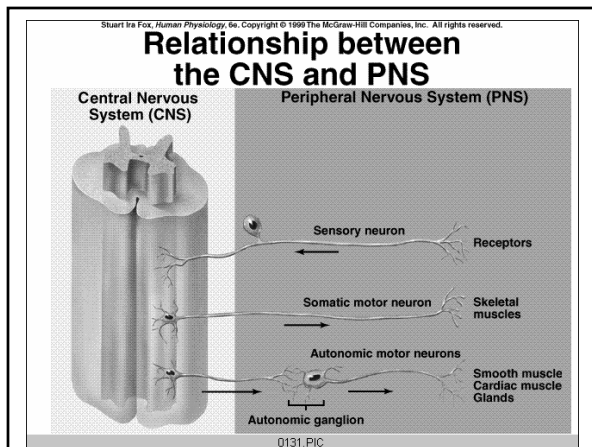












Without looking at any sources
- write out the 12 cranial nerves, in
order

The cranial nerves

